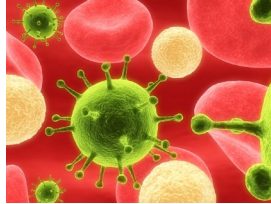


INTRODUCTORY MEASUREMENT

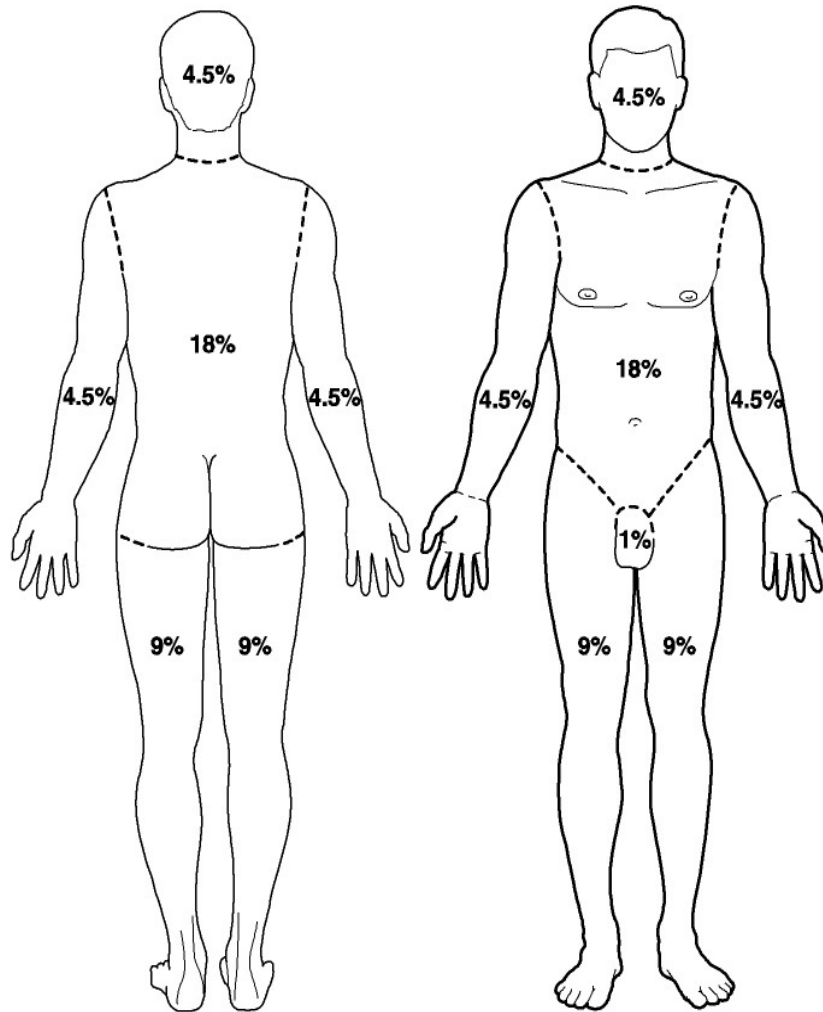
INVESTIGATION

HOW MANY BACTERIA ARE ON MY BODY?



Q1. Place your left hand down flat on a sheet of centimetre-squared grid paper. Trace around it. Now count the squares to estimate the area of your left hand. What is approximate area of your left hand?





Q2. The Rule of Nines is shown in the diagram at right. It shows the areas of the human body as approximate percentages. Doctors who treat burns victims use this as a guide as to a patient's level of injury. Approximately what percentage is the area of your left hand?

Q3. The area of skin of an average adult is about 2 square metres. Using your answer from Question 2, calculate the approximate area of your left hand. How does this compare with your answer to Question 1?

Q4. It is estimated that there are one million bacteria that normally live on each square centimetre of human skin. Using your answer to Question 1, approximately how many bacteria are on your left hand?