

ADD AND SUBTRACT FRACTIONS

SKILLS QUESTIONS

COMMON DENOMINATOR

If you were asked to rank $\frac{3}{8}$, $\frac{1}{2}$ and $\frac{7}{16}$ in order of size you would first bring them all to a common denominator.

$$\frac{3}{8} = \frac{6}{16}$$

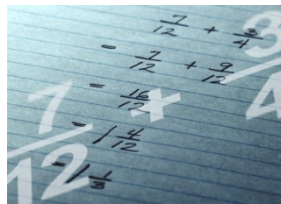
$$\frac{1}{2} = \frac{8}{16}$$

$$\frac{7}{16} = \frac{7}{16}$$

Now you can see that they can be ranked (beginning with the smallest fraction)

$$\frac{6}{16} \quad \frac{7}{16} \quad \frac{8}{16}$$

Of course, the correct answer would be $\frac{3}{8}$ $\frac{7}{16}$ $\frac{1}{2}$



Rank each set of fractions in order of size. Begin with the smallest fraction.

Q1. $\frac{26}{3}$ $\frac{7}{8}$ $\frac{5}{6}$ $\frac{11}{12}$ $\frac{8}{9}$

Q2. $\frac{1}{2}$ $\frac{3}{4}$ $\frac{15}{16}$ $\frac{7}{8}$ $\frac{11}{16}$

Q3. $\frac{9}{10}$ $\frac{3}{5}$ $\frac{19}{20}$ $\frac{1}{20}$ $\frac{14}{15}$

Q4. $\frac{3}{8}$ $\frac{7}{16}$ $\frac{11}{12}$ $\frac{3}{4}$

Q5. $\frac{5}{9}$ $\frac{5}{6}$ $\frac{7}{10}$ $\frac{2}{3}$

Write the larger of each two fractions.

Q6. $\frac{3}{4}$ $\frac{5}{8}$

Q7. $\frac{4}{9}$ $\frac{3}{8}$

Q8. $\frac{3}{10}$ $\frac{5}{9}$

ANSWERS

$$Q1. \frac{5}{6} \frac{7}{8} \frac{8}{9} \frac{11}{12} \frac{26}{3}$$

$$Q2. \frac{1}{2} \frac{11}{16} \frac{3}{4} \frac{5}{8} \frac{15}{16}$$

$$Q3. \frac{1}{20} \frac{3}{5} \frac{9}{10} \frac{14}{15} \frac{19}{20}$$

$$Q4. \frac{3}{8} \frac{7}{16} \frac{3}{4} \frac{11}{12}$$

$$Q5. \frac{5}{9} \frac{2}{3} \frac{7}{10} \frac{5}{6}$$

$$Q6. \frac{3}{4}$$

$$Q7. \frac{4}{9}$$

$$Q8. \frac{5}{9}$$